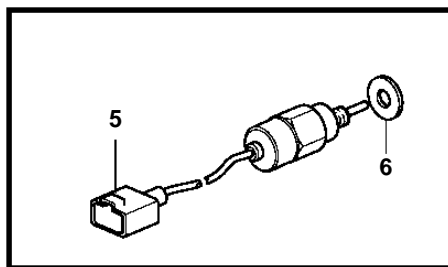
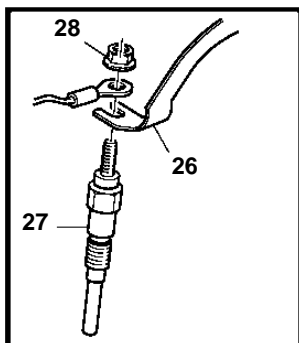
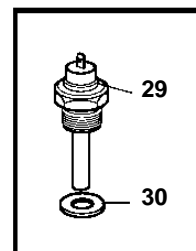
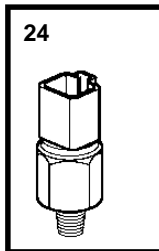
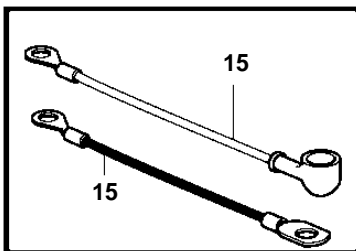
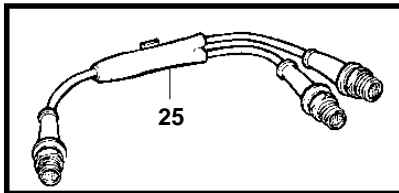
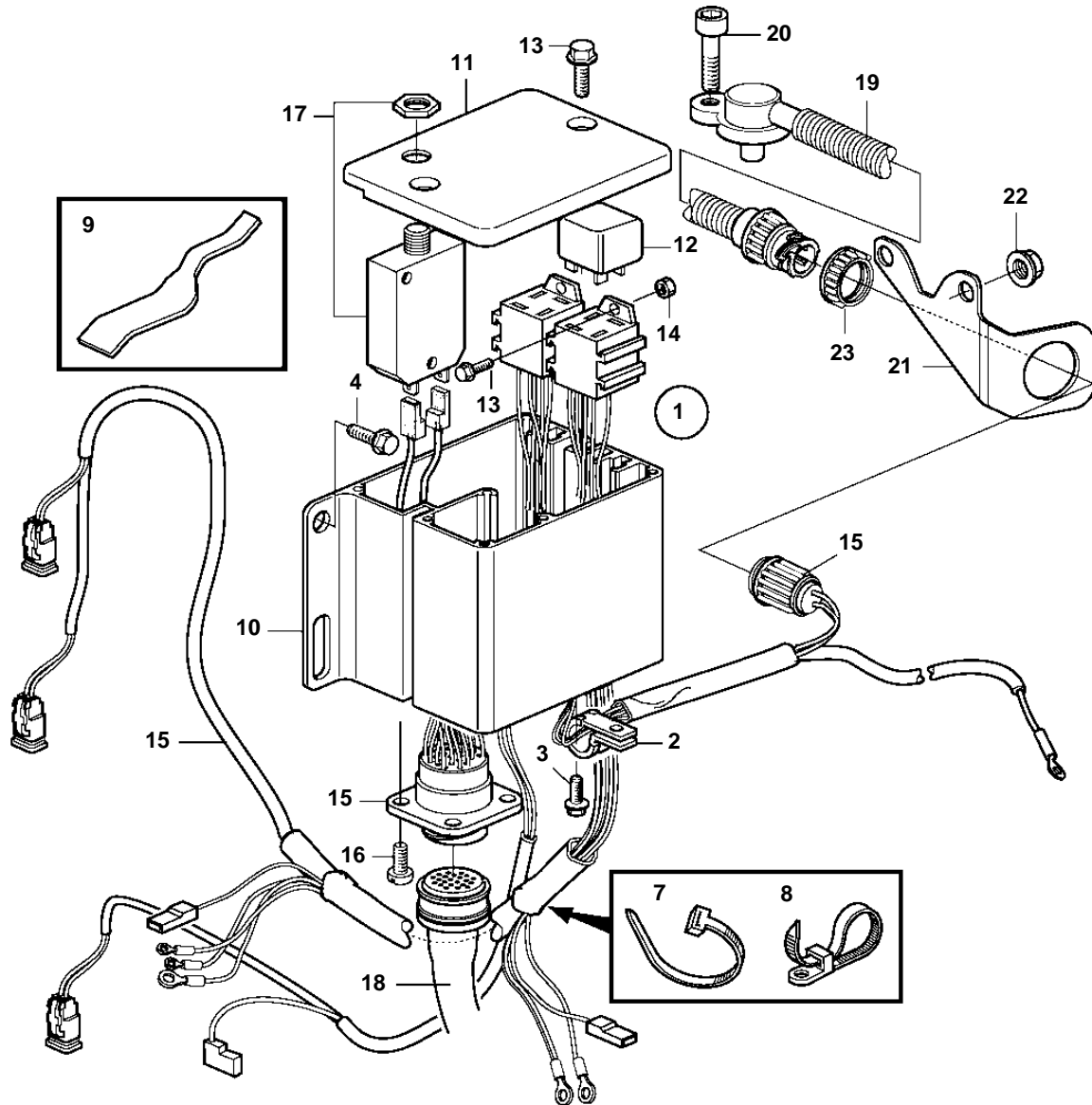


D1-13, D1-20, D1-30, D2-40



22960

D1-13, D1-20, D1-30, D2-40

REF	PART NO.	QTY	DESCRIPTION	SEE SEC.	NOTES
1	3817433	1	Electrical distribut		
2	947191	1	• Clamp		
3	947107	1	• Flange screw		
4	946544	2	• Flange screw		
5	3584127	1	• Stop solenoid		
6	3580092	1	• Gasket		
7	948211	6	• Strip clamp		
8	948616	1	• Strip clamp		
9	3812709	1	• Spring		
10	3812685	1	-		
11	3812683	1	Cover		
12	873765	2	Relay		
13	948663	4	Screw		
14	955780	2	Nut		
15	3809732	1	Wiring harness		
16	955119	4	Screw		
17	968821	1	Fuse		
18	846648	1	Extension cable		L=3.0m
	846649	1	Extension cable		L=5.0m
	846650	1	Extension cable		L=7.0m
	873838	1	Extension cable		L=9.0m
	873839	1	Extension cable		L=11.0m
19	3944124	1	Sender		
20	963684	1	Screw		
21		1	Bracket	8329	
22		2	Screw	8329	
23	3963413	1	Attaching ring		
24	3808796	1	Pressure monitor		
25	1140598	1	Y-koppling		For double steering positions.
26	3809642	1	Current bar		D1-13
	3812103	1	Current bar		D1-20
	3883705	1	Current bar		D1-30
	3886459	1	Current bar		D2-40
27	3809641	2	Glow plug		D1-13
	3809641	3	Glow plug		D1-20, D1-30
	3809641	4	Glow plug		D2-40
28	3883704	2	Nut		D1-13
	3883704	3	Nut		D1-20, D1-30
	3883704	4	Nut		D2-40
29	827151	1	Temperature sensor		
30	947624	1	Gasket		